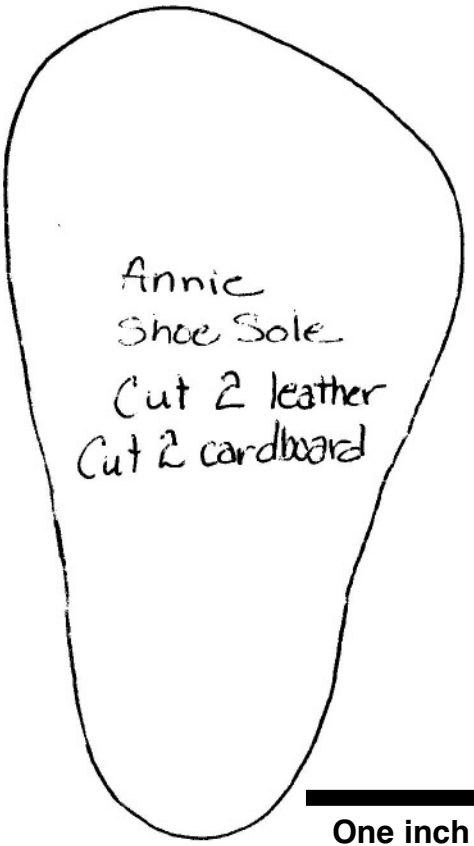
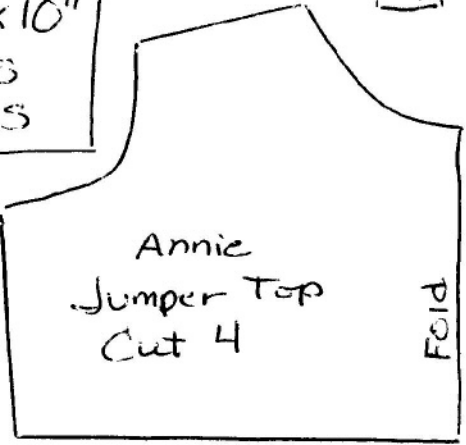


Jumper Skirt
Cut 1 - 9" x 36"

Petticoat
Cut 1 - 8" x 36"

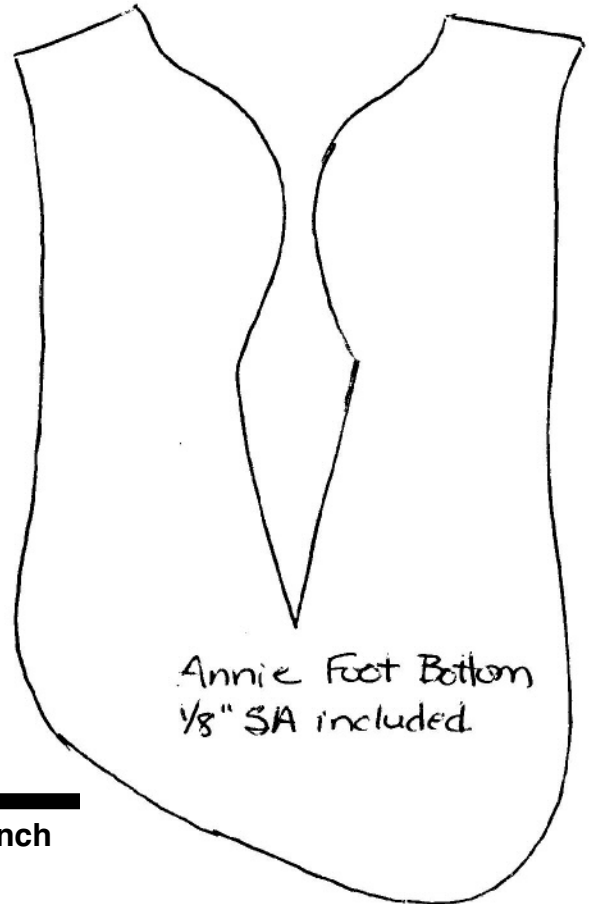
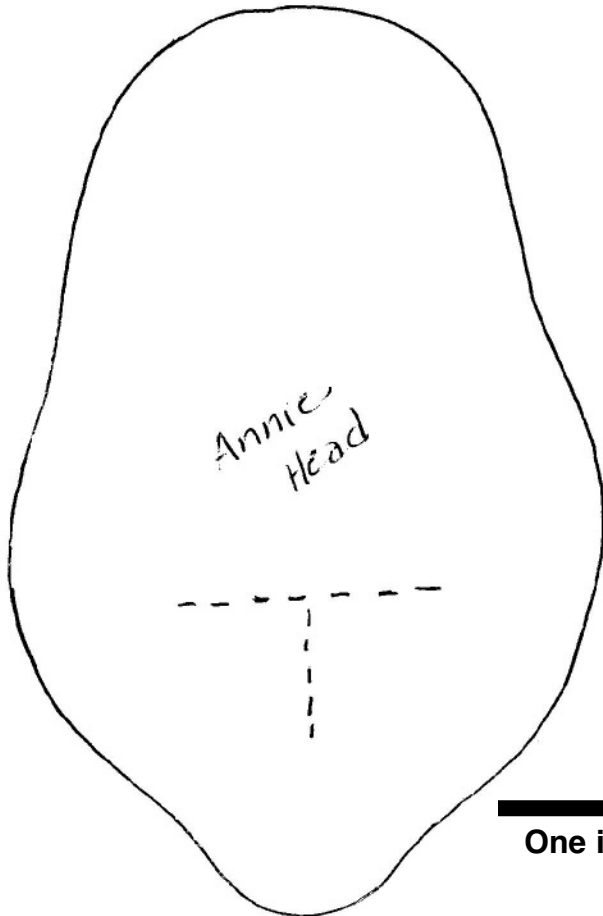
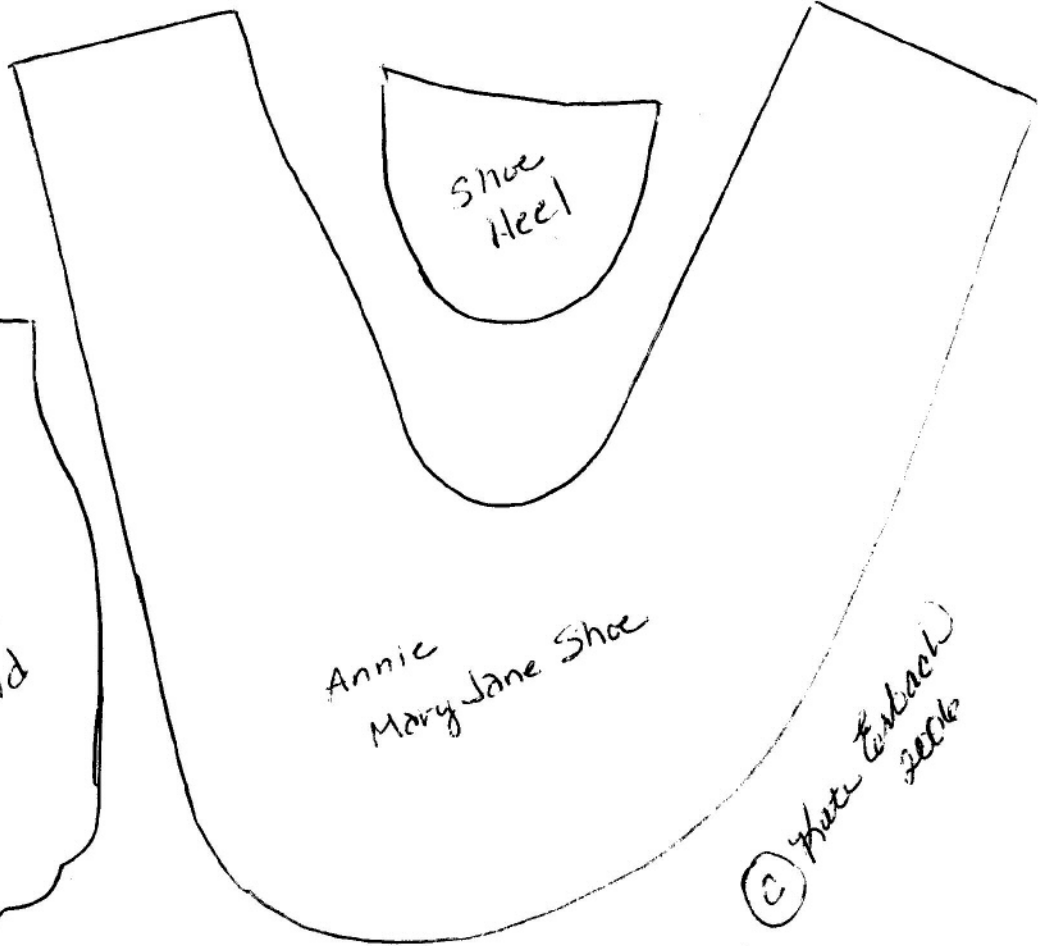
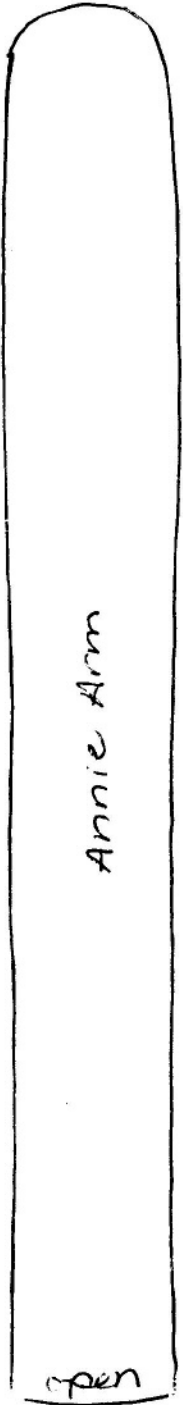
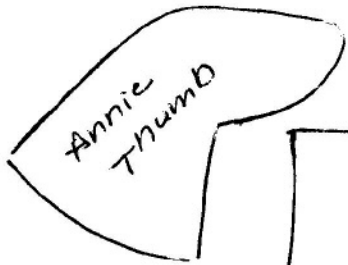
Cut 4 - 1" x 10"
jumper ties
on the bias

Jumper band 1 1/2" x 36"



One inch

Shoe Strap
Cut 2 pieces
leather $3\frac{1}{8}'' \times 5''$



One inch

A solid black horizontal bar representing a one-inch scale.

