



Kitty Kat Pincushion (height 6-7", width approximately 6")

Supplies

- WoolFelt® manufactured by National Nonwovens or any other type of felt (approximately 8½" X 11")
- scrap of pink wool felt
- two squares felted wool (5" X 5")
- small piece of ribbon
- stuffing
- pipe cleaner
- black crochet thread
- bead stringing wire (0.012"/0.3 mm)
- doll-sized button to match the felted wool
- novelty buttons
- turning tools
- awl
- air-erasable marker

Kitty Kat

All pattern pieces for the cat are templates. Copy the pattern onto card stock and cut out the individual pieces. Fold the felt in half and trace around the card stock cutouts using an air-erasable marker. Felt doesn't have a right and wrong side. However, if you choose to use another fabric, make sure that it is folded right sides together.

Sew on the marked lines at approximately 12 stitches/inch. Back stitch at the beginning and end of all lines of sewing. Do not leave an opening on the head, body front, or body back. Leave open where indicated on the ears and tail. Cut out each pattern piece leaving a 1/8th-inch seam allowance. Cut along the lines for the openings on the ears and tail, .

Cut openings in the head, body front, and body back as indicated on the pattern. Make the cut through one side only. Using turning tools, turn the cat's body pieces, head, tail, and ears right side out. Be sure to smooth out all the seams and push out the points as much as possible. Because felt is thick and stiff, this turning part might prove to be a bit trying. Small finger turning tools are helpful.

To define the legs, sew a line of stitches on the body front and body back pieces as shown on the pattern pieces. Back stitch at the beginning and end of the leg lines to secure. Bury the thread tails in the cat's body after stuffing.

Stuff the body front, body back, and head firmly. Make sure that you get the stuffing right into the ends of the front and back paws and into the little points. Do not stuff the ears. For the tail, bend one end of the pipe cleaner back about ¼ of an inch. Place the bent end in the opening at the bottom of the tail and push the pipe cleaner right into the tip of the tail.

It is not necessary to close the slits the head, body front, and body back. Pin the ears on the top cat's head as indicated on the pattern piece or wherever you find pleasing. Stitch the ears to the head.

Using an air-erasable marker, draw the facial features as shown on the pattern page. Cut a small triangle of pink felt and carefully glue it on the nose. Thread a needle with 12 to 18 inches of crochet thread and knot the end of a single strand. Sew in through the opening at the back of the head and come out at the outside corner of one of the eye lines (A). The knot should get caught up in the stuffing inside the head. Pass the thread over the line for the eye and take the needle back into the head at the inside corner of the same eye (B). With the thread under the felt, push the needle back out at the outside corner of the opposite eye (D). Pass the thread over the line for the eye and push the needle into the inside corner of the same eye (C). Pull the thread so that it lies flat on top of the felt, but not so tight that the felt puckers. Traveling underneath the felt, exit at the bottom point of the pink felt nose (E). Take the needle downwards on the face to the center of the mouth (F). Push the needle into the head and out at one of the outside corners of the mouth (G). Go back to the center of the mouth (F) and push the needle into the head and back out at the outside corner of the opposite side of the mouth (H). Bring the needle back to the center of the mouth (F) and push it into the head, through the stuffing, and tie off somewhere along the lip of

the opening at the back of the head.

Pin the head to the neck stump of the body front. Make sure that the slit at the back of the head is covered by the neck. Ladder stitch the head to the neck. Pin the body back to the body front so that the slit sides are together. Make sure that the body back is centered on the body front and that the front and back paws are level with each other. Ladder stitch the body front to the body back.

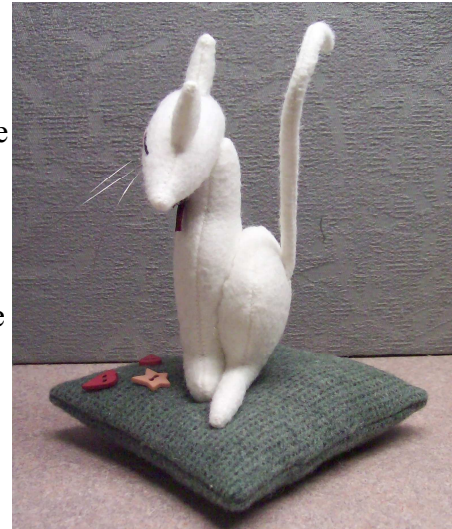
Decide on the placement of the tail on the body back. Push the tip of an awl into felt and stuffing to make an opening. Leaving approximately half an inch of pipe cleaner extending from the opening at the bottom of the tail, cut off any excess. Push the pipe cleaner wire into the opening and direct it down towards the legs in the stuffing. Stop when the tail felt meets the body back. Stitch the bottom of the tail to the body. Curl the tail, or not, depending on how you want your cat to look.

Using an air-erasable marker, mark the placement of the whiskers on the cat's face. There three on each side. Thread a needle with approximately 18 inches of beading wire. Push the needle through a whisker mark one side of the face, travel under the felt, and exit through the corresponding mark on the other side of the face. Pull the wire through until approximately 1 to 2 inches remain at the end to form the whisker on the needle entry side of the face. Cut the wire off at an equal length on the exit side. Repeat for the other whiskers. To secure the whisker wires, pick up a small dot of glue on the end of a pin. Carefully push the tip of the pin into the felt around the whisker leaving the glue to hold the wire in place. Use a gel pen to put a small black dots at the base of each whisker to simulate dark hair follicles.

Tack or glue a bow to the cat's neck or tie a ribbon around it.

Pincushion

Place the two 5-inch squares of felted wool right sides together. Sew around the squares using a ¼-inch seam allowance leaving a 1-inch opening for turning on one side. Turn the cushion right sides out, smooth the seams, and push out the corners as much as possible. Stuff the cushion lightly and ladder stitch the opening closed. So that the cushion doesn't wobble, sew a doll-sized button in the center of the bottom of the cushion. Sew it on up through the stuffing and out through the top of the cushion. You can put a button on the top of the cushion, but the cat will sit on it and it will not be seen. Carefully run some glue along the bottoms of the cat's paws.



Position the cat on the top of the cushion and secure with pins. Allow the glue to dry. Ladder stitch the cat to the cushion for added security. Decorate the cushion with novelty buttons.

Variations

Of course, the cat and pincushion do not have to be made out of wool felt and felted wool. You can use any fabrics that you want. You can use craft felt, but some types pull apart easily or pill with wear. You can add color to your cat's fur by dry brushing with acrylic paint (Siamese cat and orange wool cat). If you choose to use something other than wool for the cushion (white cat on the pink floral cushion), you might want to consider filling the cushion with crushed walnut shells rather than stuffing. The walnut shells sharpen and condition the pins. You might be able to find the walnut shells in bags at your local pet store. They are used as litter for birds and reptiles. If you can't find them at the pet store, they are available online.

