

## Bleeding Heart Zombies

These bleeding hearted Zombies are on the mend. A Easy pancake pattern is complete with easy to follow instructions. Great pattern for any beginner. Easy to sew and easy to paint. Make more than one in a day. Big Zombie is 8 inches the small zombie is 5 inches tall.

### Supply List

**Cotton fabric:** the sample color is a Pea Green.

**Acrylic Paint:** Red, White, Green, Black

**Fabric Pens:** Fine tip fabric pens Black & Brown

**Colored Pencils:** Black & Red

**Mohair:** 2 inches at the most

**Other supplies:** Stuffing, Matching Thread, Turning and Stuffing tools, #1 & #2 paint brush. Sewing machine & basic sewing kit.

Cyndy's Dolls, LLC

ArtisticFiguresInCloth.BlogSpot.com



### Head and Body

1. Trace Head and body on wrong side doubled fabric.
2. With right sides together sew on the drawn lines, cut out leave a 1/4 seam allowance.
3. Clip all curves and angles to the seam. Cut a small slit in the back center of head to turn and use for the neck to slip into after stuffed. Turn right side out.
4. Stuff head and body. Sew the openings closed.
5. Pin the back of the head to the body neck tab. Sew the body to the head sew to body under the chin. Go around twice to make sure it is on securely.

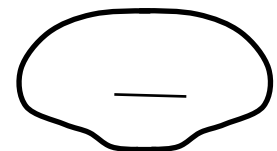
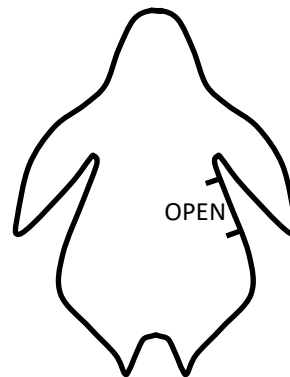
### Drawing and Painting.

Refer to templates for a visual placement when drawing. Do not be afraid they are zombies after all.

1. Use the brown fabric pen and lightly draw the outline of the eye do not draw the iris or pupil. Draw the nose, mouth heart and blood drops. Fill in the nose holes.
2. Fill the eyes with white paint. Fill the heart and blood drops with red paint. Allow to dry.
3. Paint in a green iris allow to dry, then paint in the black pupil. Allow to dry.
4. Paint over the brown pen markings of the mouth with black acrylic paint use #1 paint brush.
5. With a black fabric pen outline the outer rim of eye and heart. Draw lines on heart, add eyelashes.
6. Use black pencil to circle the rim of eye, then a red pencil to circle around the black rim just made.
7. Use the #1 paint brush to add a dot of white paint in each pupil and a curved highlight in the heart.
8. Sew a 2 inch piece of mohair onto the top of the head.



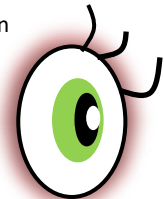
© 2022 C.Sieving



Trace on the wrong side of doubled fabric. Cut slit in back of the head.



Allow to dry when painting.



Lightly draw heart, paint red, add a curved line down the center, stitches and white highlight.



