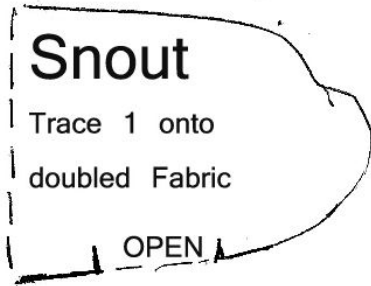


Kangaroo Chatelaine

For use with the Lady Chatlaine pattern

by Mary Ann Kaahanui & Bonnie B. Lewis

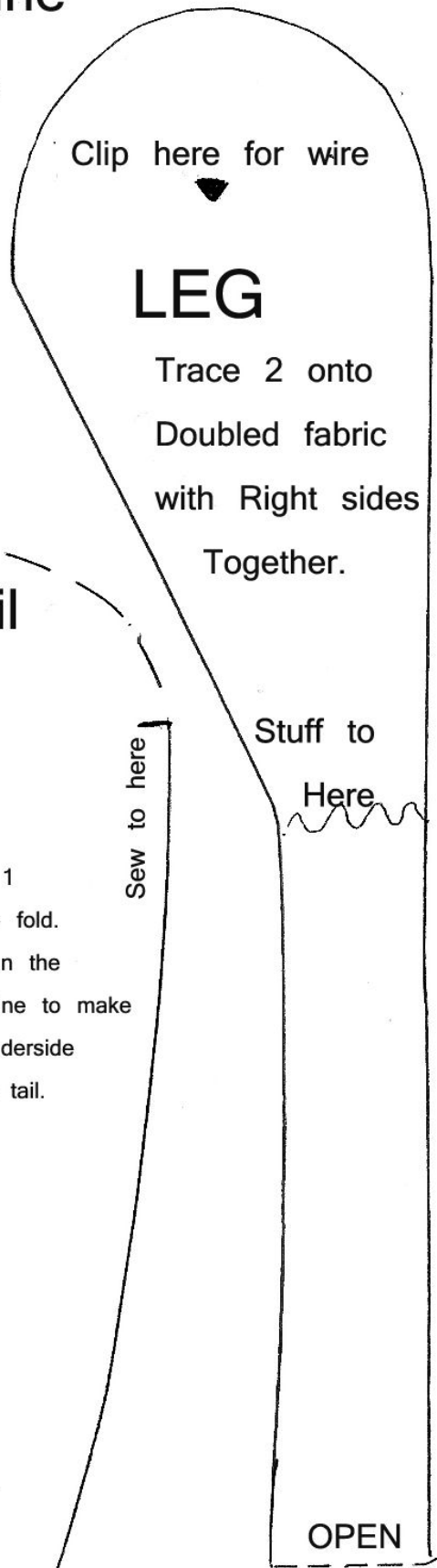
Modifications by Karen Shifton 2007



Snout

Trace 1 onto
doubled Fabric

OPEN



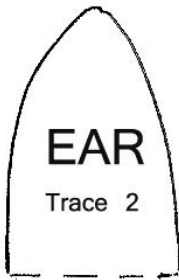
Clip here for wire

LEG

Trace 2 onto
Doubled fabric
with Right sides
Together.

Stuff to
Here

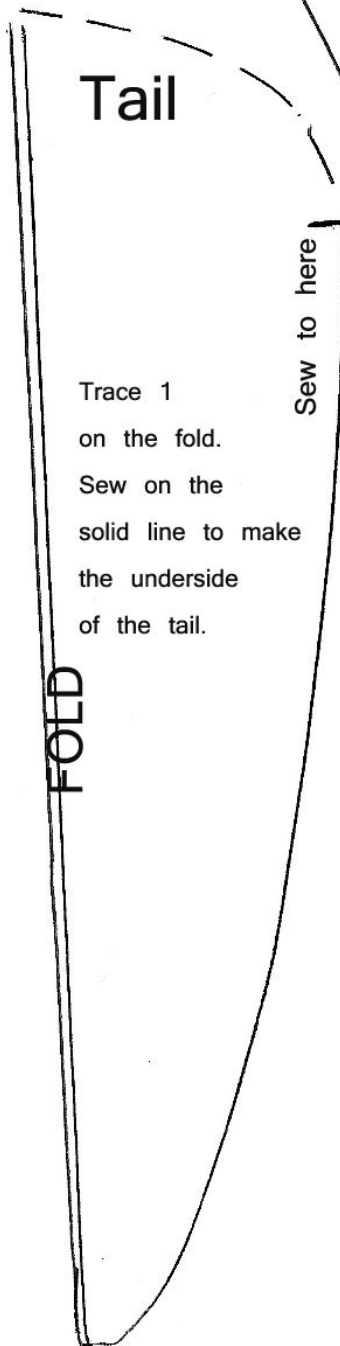
OPEN



EAR

Trace 2

Trace 2 ears onto
doubled fabric with
RST.



Tail

Trace 1
on the fold.
Sew on the
solid line to make
the underside
of the tail.

FOLD

Sew to here