

Bleuette Size MANIKIN to be made from fabric.

About 10 $\frac{3}{4}$ " to 11" tall. (27cm to 29cm)

Judi Ward-Judi's Dolls. www.judisdolls.com www.thedollnet.com www.picturetrail.com/judisdolls
© September 29, 2007

This little MANIKIN is Bleuette sized, but NOT intended to duplicate the Bleuette jointing, or "look". In fact, without even a head, she makes the perfect "try on" model while sewing clothes for "real" porcelain and compo Bleuette's or for the Cloth Bleuette taught in my class at www.thedollnet.com. By using a MANIKIN for trying the clothes on you save loosening all of the joints on the Bleuette's....and....worse yet, dropping one with a porcelain head and breaking it!...or...Dirtying a cloth Bleuette.

This Manikin is also perfect for displaying the clothes you have made, without having to have many, many Bleuette's. This Manikin is quite easy to make, has a cloth shoulder plate, both for the novelty and so the arm attachment, and closing is hidden under the shoulder plate. You can make her simple head and attach it with my 30 second turning head technique or leave the head off completely and use her like a dress form.

I am not providing a face for her, as she is charming as is...but...of course if you "do" faces, by all means do a face if desired. She takes a 7" doll wig, which makes it simple to Coif her. Simple yarn strand hair is also easy and cheap. Just lay out about 50 strands of thin yarn, about 15" long. Sew down the center. Sew or glue to head, from front hairline to the nape of the neck. Pull the yarn to each side and tie it down on each side at about "mouth" level. Braid the hair and tie ribbons at the ends. Anyone who has made a cloth doll or two knows how to do this easy hairdo. It is pretty "kid safe" too.

This little Manikin can be made from Doll Face Pink Velour, or from soft, pale peach 100% cotton woven. I have made them from both with excellent results. I did back the woven cotton with very thin Pellon® batting, to make "lump free" stuffing easier. This is a hint that works for any woven cotton doll. The layer of thin batting, or even Warm and Natural® batting, gives a smooth layer between the stuffing and the cloth. If you are going to use woven cotton, make a "sandwich" of batting and fabric like this....Batting on table...Fabric WRONG side down...Fabric RIGHT SIDE down...and then batting. Treat the sandwich as if it were just fabric, ironing the templates to the batting.



Velour.



Woven cotton.



Velour.



Yarn braids.



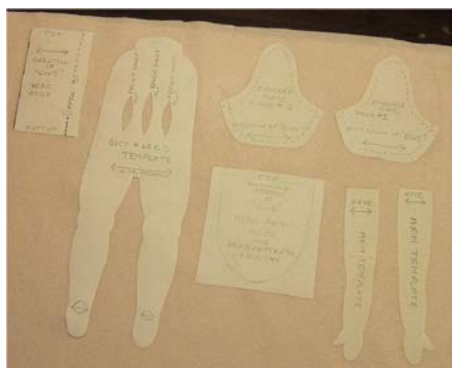
Blonds.



Red Heads.

All wigs, shoes, and stockings are from www.dollsupply.com Chemise above, and other clothing shown later, from www.thebleudoor.com

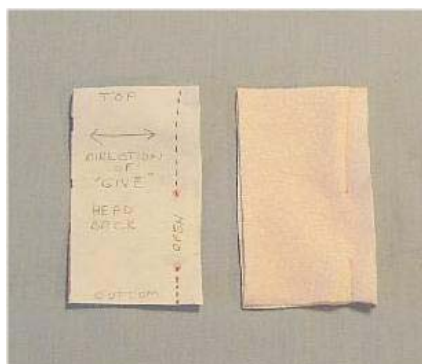
The directions for this easy doll/Manikin will be mostly photos. Though her construction is easy, she is small, so she requires your very best sewing skills and tiny stitches. I turn my sewing machine length down to 1.0. About 25 stitches per inch. Smaller stitches, smaller mistakes!



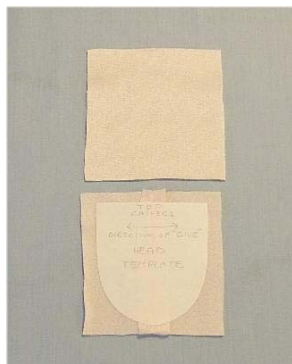
Layout on the FUZZY side of velour.
Note the square for the head front is set on the doubled fabric too. I just toss the one I don't use for the woven fabric version.
Head....



Parts cut out and/or separated on woven cotton. It will be the same on velour. There is a layer of Pellon on top and bottom.



Sew the head back seam, press seam open.



Place and iron head template on the sewn head back.

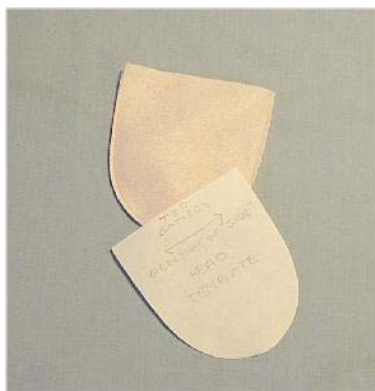


Place back and front together and sew around curved edges. Leave top open.

In the last photo above, I turned the head front piece a bit so you could see it underneath. Keep the grain straight for sewing though, or the face will stuff crooked. Before turning RSO, trim the seams very small, and notch the rounded edges, especially with woven fabric.



Head sewn and cut out.
From back.



Head sewn and cut out.
From front.



Head turned RSO from back.
Sun came out!



Head turned from front.



Stuff head REALLY hard.
Clouds have gathered again!



Gather and close top.

I know you are now saying to yourself...But the stuffing is coming out of the hole in back!!! Never fear, you are going to push it back in and add even **MORE STUFFING!**



The stuffing presses out to the top, sides and chin.



I un-stuffed a head, to show how much stuffing is in a HEAD!!!

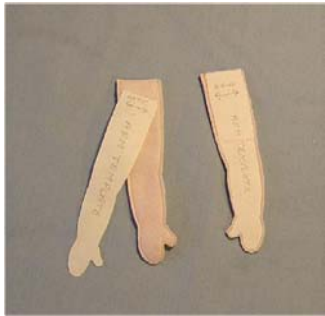
Force stuffing tightly into the head back, shaping the face and head uniformly, and keeping a space in the center back free of stuffing. That is where the neck will go later. Set the head aside for now. Unless you are doing a face...Do that now if desired, so if you mess up, you can do another, before joining the head to the body.

Arms...Choose the mitt or the finger hand. If you do the hand with fingers, you will need ten Pipe Cleaners that are made to actually clean pipes. The process is the same as for the mit hands, just more stems...one for each finger and the thumb...and...you must push the "real" pipe cleaners into each digit, without a fork. The fork will take up too much space. I also pinch the folded end with my hemostats first, to be sure it will be small enough to fit into the tiny digits. If you already "do" tiny fingers, go for it...If not you probably don't want to "go" there!

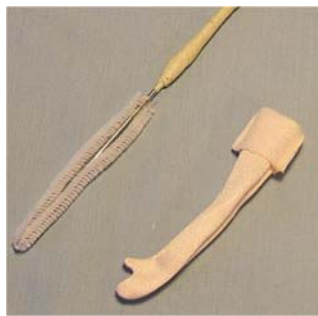
Sew the arms right along the Freezer paper. Cut out, leaving a very small seam allowance. Clip Vs and notch rounded edges, especially with woven fabric.

Stuff the arms with at least 2 chenille stems that will go from the thumb/hand, up to past the elbow. This way you can bend the Manikin's arms at the elbow, wrist and palm. Cut the chenille stems 7" long, and bend each in half. I like to use thinner ones for the thumbs and the fat 15mm ones for the hand. Guide one thin one into each thumb with your stuffing fork or stuffing needle. Guide one fat one into each hand the same way. If desired you can add another to the hand.

(Note: the top of the arms folded down for easy access. Doing this for all long doll parts makes stuffing easier.



Sew arms right along the Freezer Paper, and then cut out.



A chenille stem for the thumb.



Chenille stem going in.



Stems inside.

After the chenille stems are in place, pull the arm tops down even more, bend the sharp tips of the stems down towards the inside a bit and then wrap the loose ends of the chenille stems tightly with thread. This makes a "bone" in the arm.



Stems wrapped with thread.



Ready to stuff.
Mit hands.



With Fingers! They are cute!

Stuff the arms up to about 1 ½" from the top. This is the part that will sew to the top of the body. Don't put a lot of stuffing in the hands, and be sure to get stuffing down beside the chenille stems all around. Shape the little lower arm, plump and shapely. It should feel harder than the upper arm. Be sure to plan for a right and left hand and...remember, you can tip the wrists, bend the hands inward, and bend the elbows. Make the arms "cute".

Pleat the sides in, either with the seam edge pleated in at each side, or the plain edges pleated in, and then sew across the open edge. Set the arms aside.....



One arm stuffed.



Both stuffed and posed.
Tops pleated and sewn too.

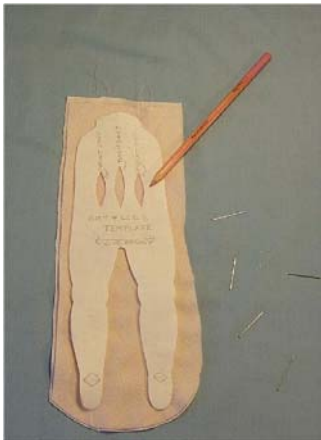


This is how they will go
on the body later.

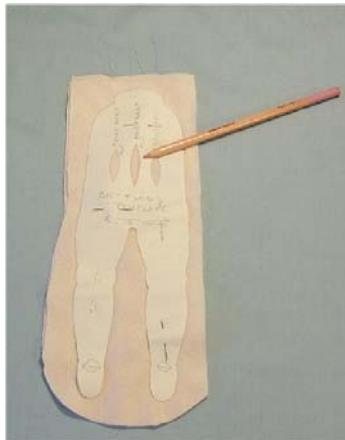
Body....

Sew around the body template, carefully going around all those curves. Cut out and clip into the Vs, especially at the crotch. Mark the 2 front darts with a pleasant shade of colored pencil. Remove template and place it on the back and mark through the back dart.

Pinch up the darts, being careful to only pinch up one layer of fabric, and sew them in. You can clip and trim them if desired...or not.



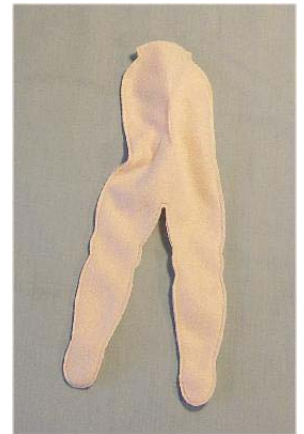
Draw through front darts.



Draw through back dart.

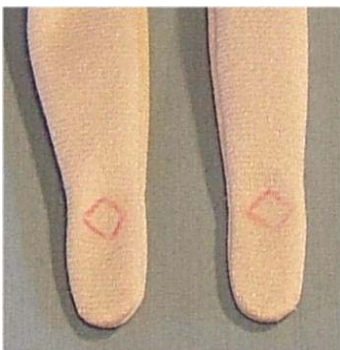


Sew front darts.



Sew back darts.

Turn the body RSO through the neck opening using a hemostat to pull the legs out. Find the front and mark the little oval at the ankle where you will sew the foot shape in place, and then stuff the feet and ankle, bending the ankle like shown below. Add stuffing straight down into the heels, after you do the ladder stitching. You can "fit" these feet to the shoes you have on hand. You can actually force the foot into a shoe and then finish stuffing it. Fabric feet are great that way!



Ankle sewing darts
marked..



Foot bent forward



Forced forward
ready to sew.



Ladder stitch ankles.

Now stuff the legs, making them shapely. Be sure to stuff the little "ball" knees. Stuff up to the waist, and then guide a cotton ball or 2" Pom-Pom down into the lower back to make a little "bum". I use a big hemostat to grip it and guide it down. You may have to "play" with it a bit to get each side even.



Cotton ball for one side.



A little "bum".



From the side.

Finish stuffing the body , shaping as you stuff. Be sure to make the whole thing as hard as possible, and make the shoulders even. I put a cotton ball in each shoulder too, right before I sew the top closed. Sew the top of the body closed. You can even overcast here. It won't show.

Shoulder plate...

Sew both parts as shown. Turn one RSO and put it inside of the WSO one. Line up the seams and sew all around the outer edge, leaving a spot open for turning. Turn the assembly RSO through the opening. You will have a weird looking thing, with a neck on each end! Photo 4 below.



Both sewn, trimmed, clipped



One RSO, going into one WSO.



Sewn around edge. Leave opening.



Turned. Weird!

Now, push one neck up into the other so you have a nice shoulder plate with one neck sticking up. straighten out all the edges and ladder stitch the little opening closed.

Stuff the neck **HARD!!!!** But **DO NOT** use cotton balls, because you can not sew through them! You have to be able to get a needle all the way through the neck for attaching the head. Just hold the neck in your hand, like a banana, and force stuffing up into the neck till it is hard. It will take a lot more than you think it will, to be really hard. Feel an apple. That is about as hard as it needs to be!

Following are pics of the shoulder plate RSO.....

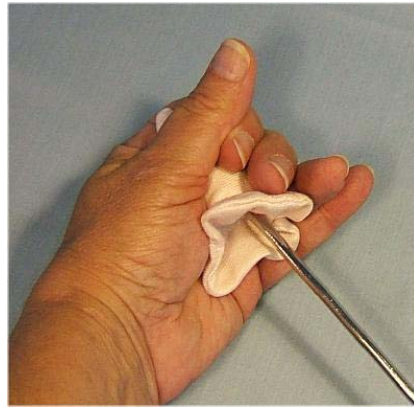
How to hold the neck to stuff it hard...

The shoulder plate, stuffed...

The body with the arms pinned in place and the arms sewn in place.



Shoulder plate ready to stuff. Sun is out!



Hold it like this. I've been tanning!

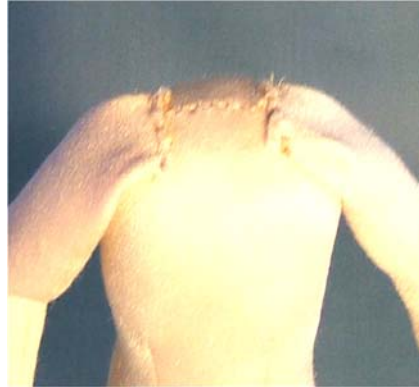


Neck stuffed hard!

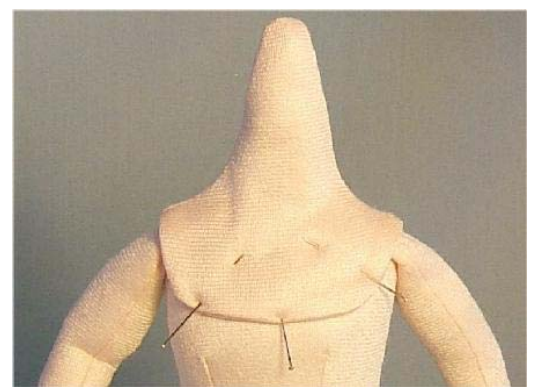
Now, pin and then sew the arm tops over the body top as shown...Pictures 1 and 2 below. Picture 3....pin the shoulder plate **front** in place.



Arms pinned in place.



Arms sewn in place.

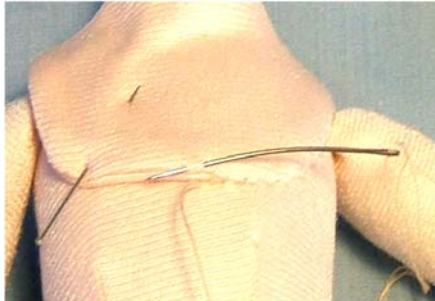


Shoulder plate pinned on in front

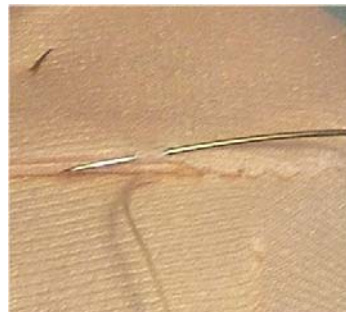
Start ladder stitching it to the body, catching the edge of the upper layer, so the sewn edge is underneath the shoulder plate for a nicer finish. Start at the seam on one side of the shoulder plate and ladder stitch it all around the FRONT to the other seam. **A Ladder stitch is...** A stitch in the body, and then directly across, a stitch entering and exiting in the top edge of the shoulderplate. Take 3-4 stitches and pull tight. Repeat, until done.



From the side, it will be bent forward at first.



The ladder stitch.



The ladder stitch, close.



In a can.

After you get the front half sewn in place, lift the back and add more stuffing. Pull it down to check for firmness, and when it is "oh, so, perfect," pin and then ladder stitch the back of the shoulder plate down to the body.

Hint...I put the doll down in a Lays Potato Chip can, or other tube, for sewing the shoulder plate on. It keeps her legs and body from getting all dis-combobulated and keeps the thread from getting caught on her arms and body. Works for me, and might for you too.

The can is not in these pics so you can see the doll better. You also have to take her out to pin the back down tight.



Lift back and add more stuffing.



Back pinned down ready to sew.



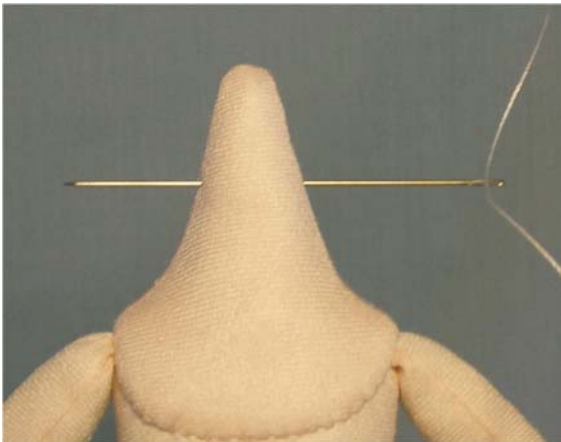
All sewn. With shoes, I stand alone!

Putting the head on....

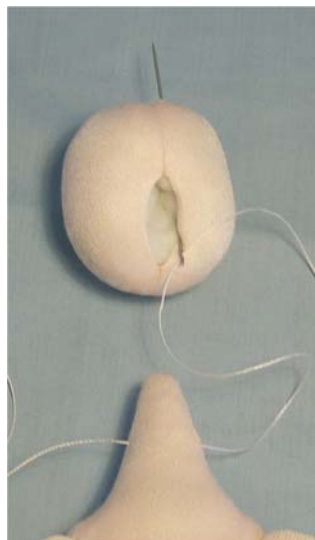
Pass a long needle with very strong thread on it through the neck, about $\frac{3}{4}$ " to 1" down from the top.

Put the needle with the cord through the back hole in the head, and out the top of the head.

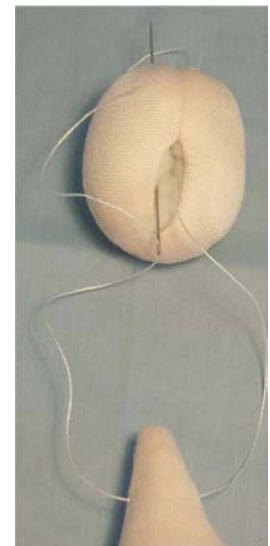
Re-thread the needle with the cord from the other side, and pass it up through the head on the other side.



Pass the needle and cord through the neck.



Put the needle and cord through and out the top.



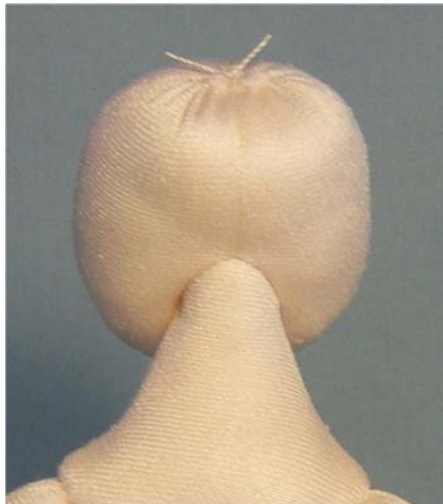
Repeat for the other side.

Pull the cords at the top of the head, pulling the head down on the neck. Check to see that the head does not go too far down, eliminating the neck on the doll. If it goes too far, you need to add more stuffing up in the head.

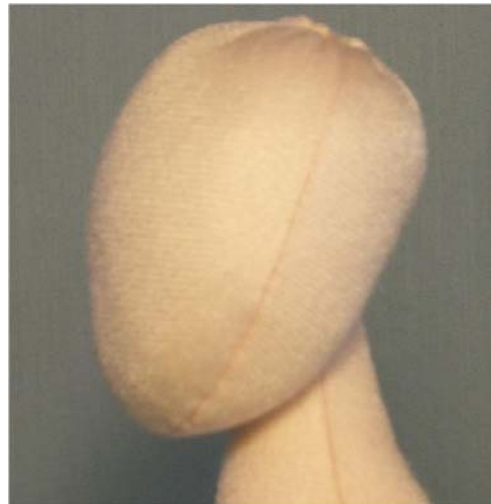
When it is correct, tie the cords at the top of the head, securing the head in place.



Cords ready to tie.



Cords tied, head down tight.



Proper position from the side.



Proper, from the front. A bit of a tip to one side for pertness, even with no face!



NOT RIGHT!!!!



Finished with an unfinished, Lays Stax, chip stand beside her.

She is ready for hair and clothes. She wears doll wigs, size 7". Doll shoes sized for Bleuette's or from Antina's S260 Size 8 www.dollsupply.com

www.thedollnet.com has several doll accessory and supply vendors too. Several have things for Bleuette's. Several have fabrics of all sorts and most also have patterns of all kinds. Do check out the Doll Net! Wigs usually need to have a bit of stuffing added to the crown area before sewing them in place. They are made for the very round porcelain doll heads.

Now, about that stand....It is very easy to make doll stands from chip cans...(and other plastic cans too)

Go to www.picturetrail.com/judisdolls, the Bleuette Album. (not the Manikin album,) and scroll down a few pics to see the way the stands are made. It is so easy and if you fill the bottom with plaster of Paris, make it real thick and spread it over the edge too, then add a dowel stick or pencil to the upright and wrap that all with masking tape...paint the whole thing and you have a good, solid stand for pennies. You can vary the height too. I simply poke a hole and tie a ribbon or string through the ends that are around the doll.

The green one on the following page is filled, wrapped, and painted. One could also add flowers or vines...Paint flowers or vines, set the plaster with stones before it dries, add Apoxy Sculpt® stuff to it...etc...

The green one ties around my Cloth Bleurette's hips. The blue, unfinished one will tie around chest.



A couple of Free stands.



Choo Choo dress, 1939 # 32



Dress Habilee 1912 # 15



Nighty, 1939 #33



Panty chemise 1916 # 14



Chemise 1914 # 18

All you need to make these little Manikins are less than ¼ yd. of fabric, good polyester stuffing, stuffing tools, chenille stems, strong cord, threads to match the dolls skin, sewing needle, a wig or yarn, shoes and stockings, your best TEENY TINY sewing skills and lots of Bleu Door patterns for an endless supply of fun!

Judi's Dolls/Judi Ward

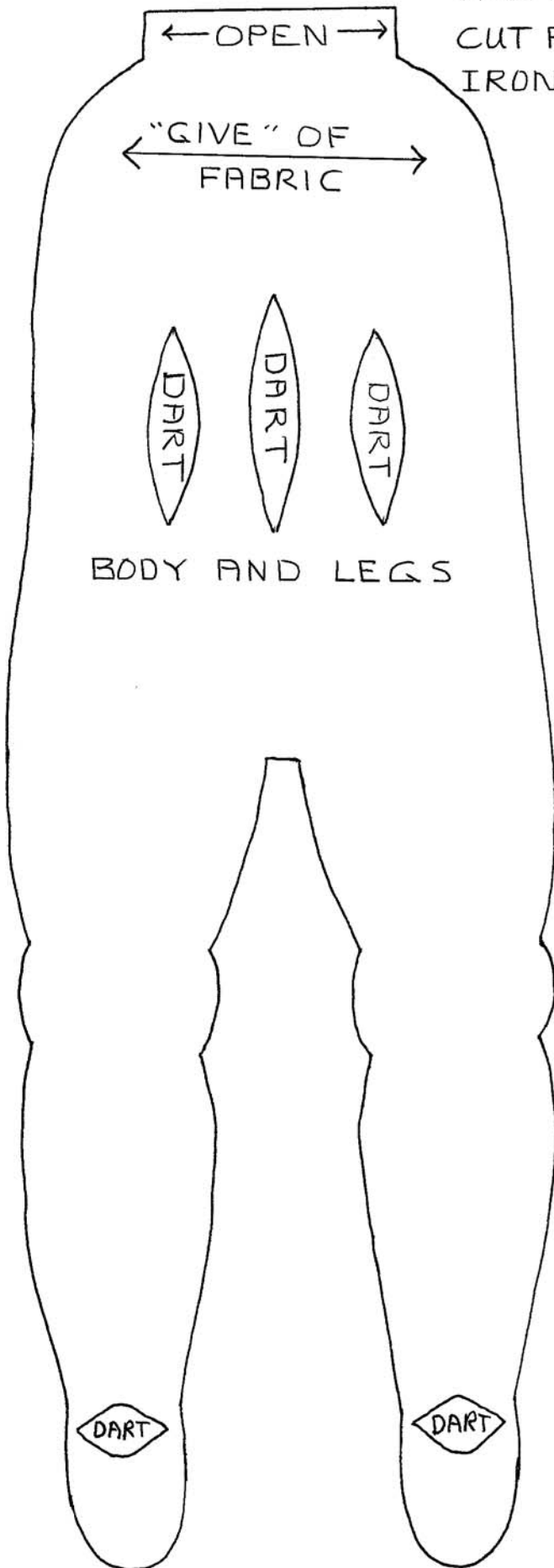
©2007 Bleurette Sized Manikin to be made from Fabric.

www.judisdolls.com

www.picturetrail.com/judisdolls

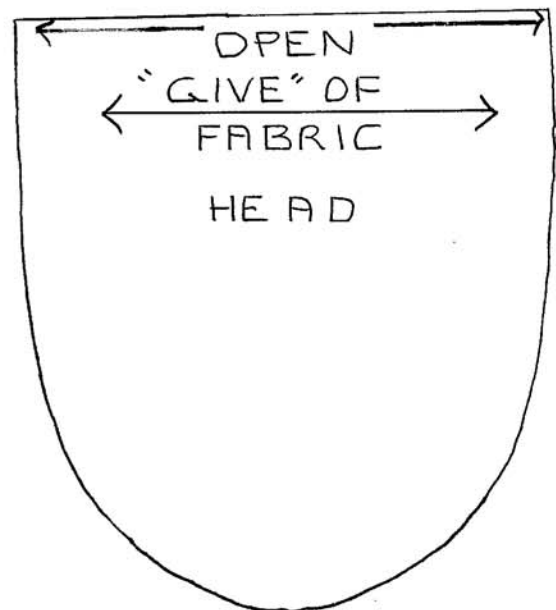
www.thedollnet.com

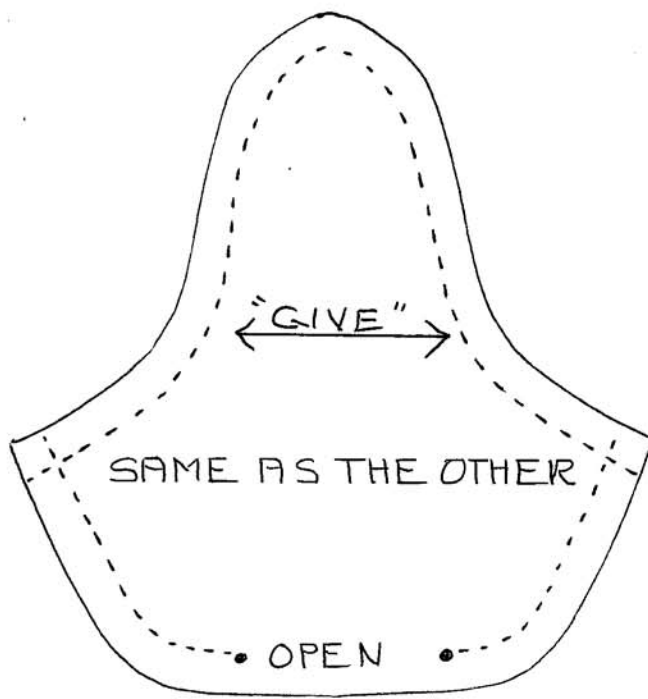
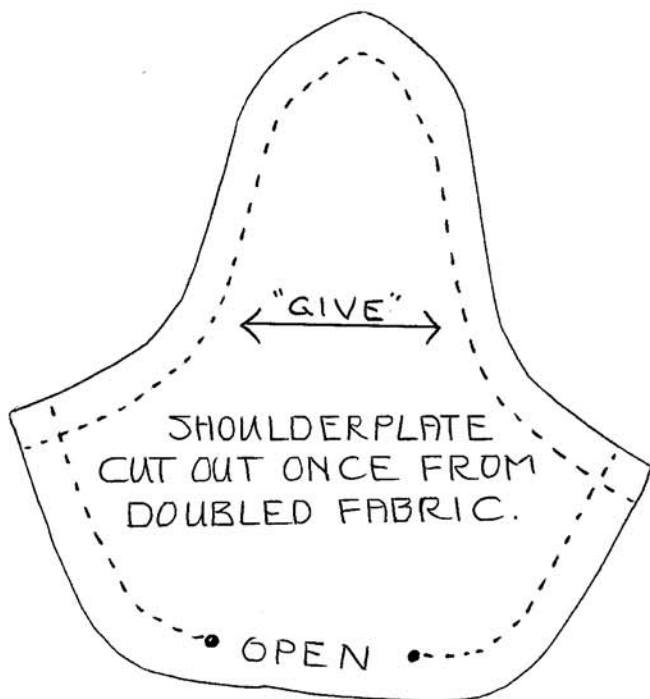
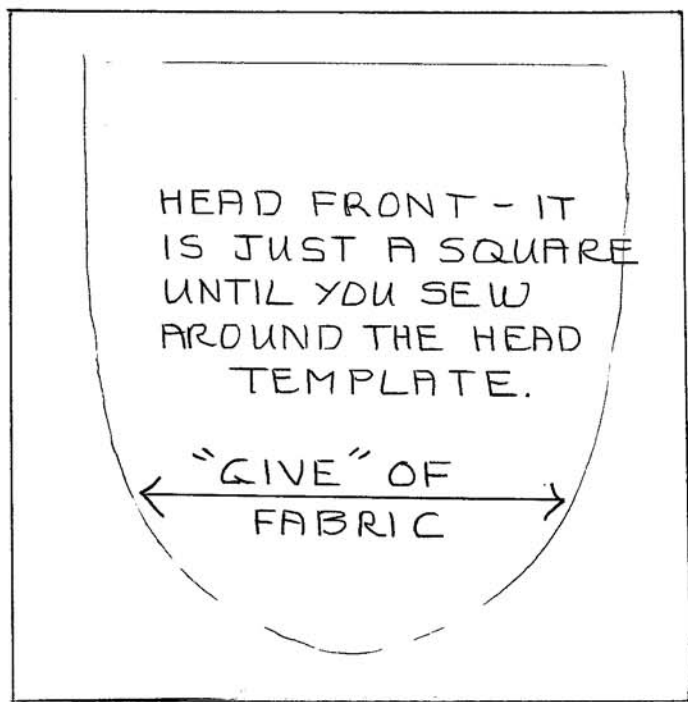
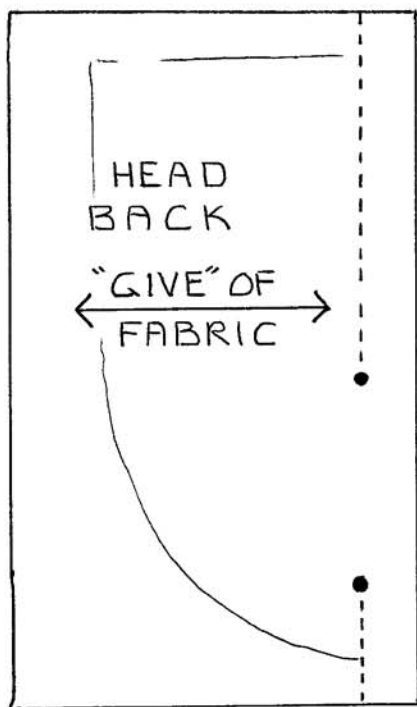
ALL PIECES ARE TEMPLATES
CUT FROM FREEZER PAPER.
IRON TO DOUBLED FABRIC.



MAKE 2 ARM PATTERNS.

IF YOU ARE MAKING THE FINGERS HAND
CUT OFF THE LINES YOU DREW BEFORE SEWING.





ALL OF THE PIECES ON THIS PAGE ARE MADE OF FREEZER PAPER FIRST AND THEN IRONED TO DOUBLED FABRIC AND THEN CUT OUT BEFORE SEWING.