

SAMANTHA'S ANGELS  
Samantha-Ann Grout  
Monique The Country Angel

**MATERIALS**

1.  $\frac{1}{2}$  yard muslin
2. yarn for hair
3. stuffing
4. acrylic paint or color pencils or gel pens for face
5. 1 yard fabric for dress and pantaloons
6. scrap for wings
7. acrylic paint for shoes

Monique  
The Country Angel

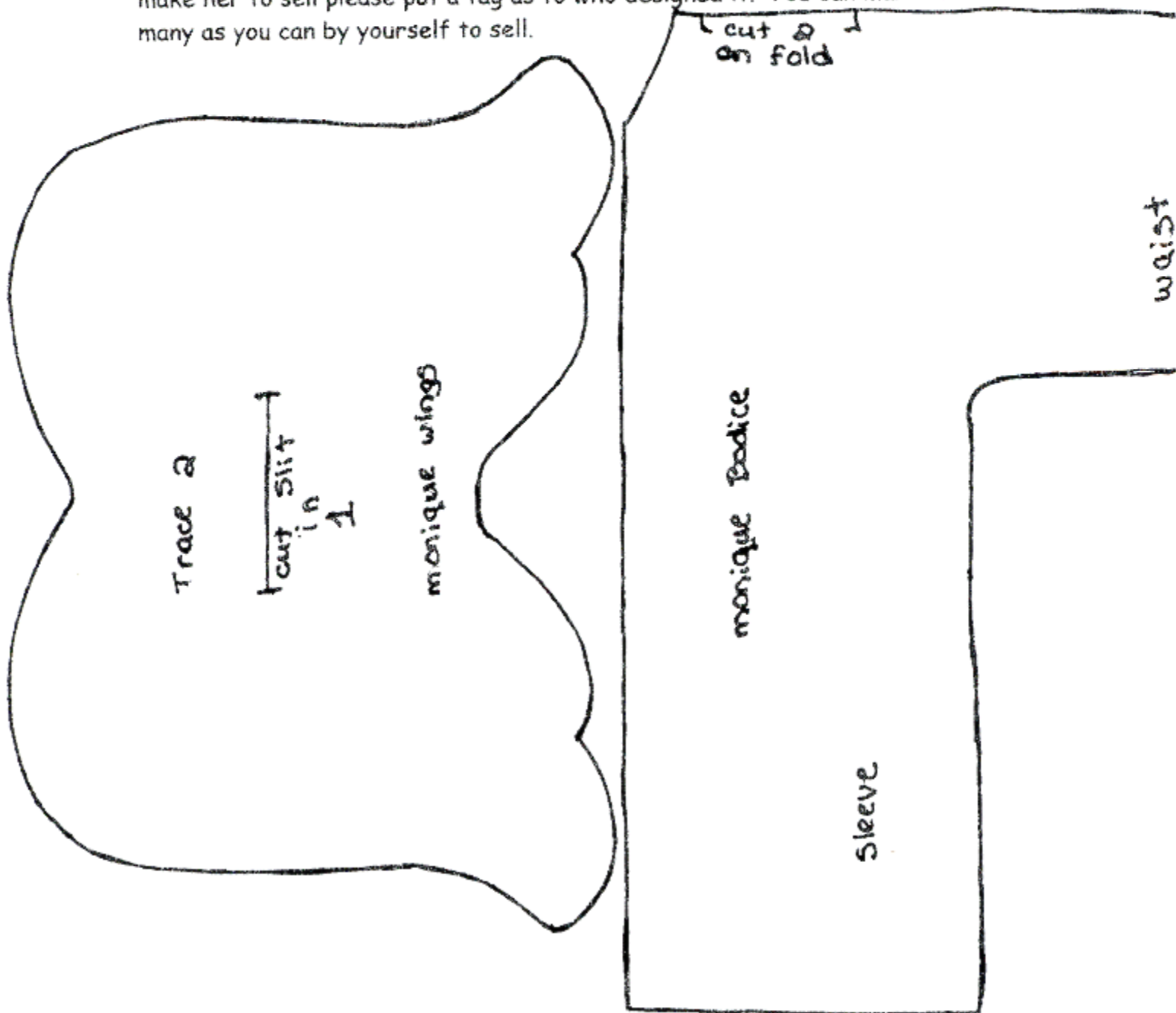
Please read all instructions before beginning. Have Fun!!

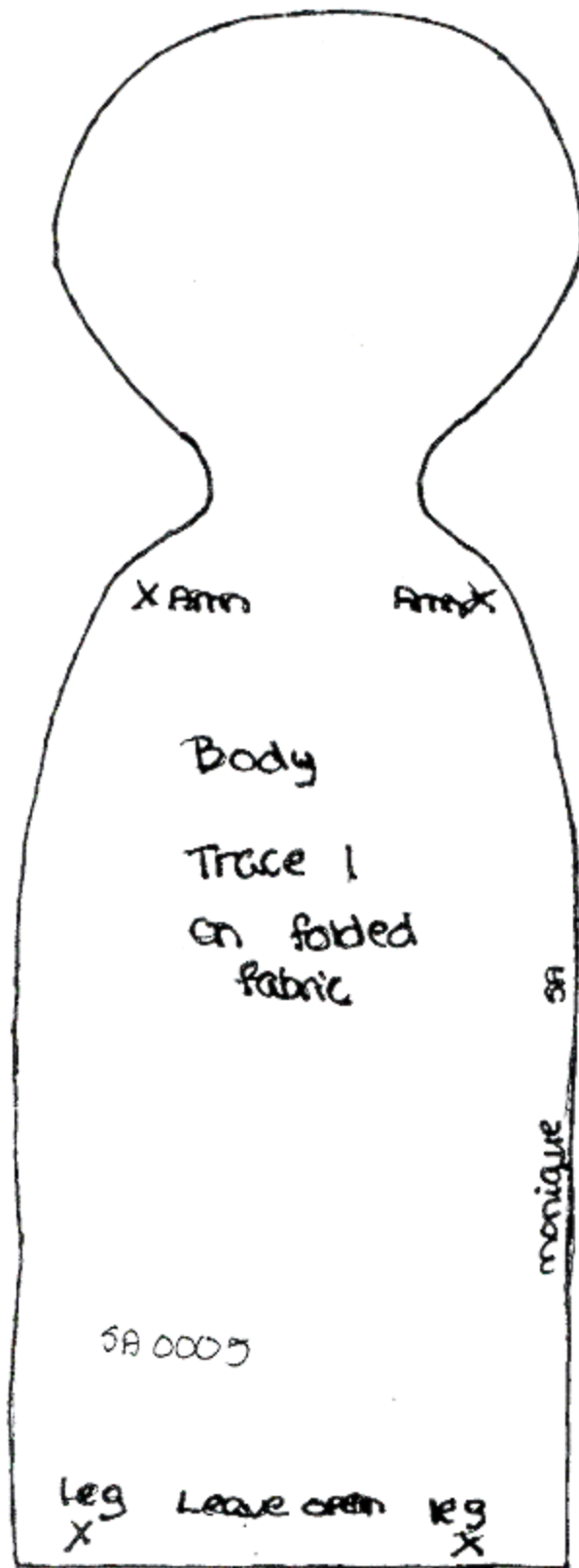
1. Trace body, arms and legs onto fabric that has been folded to make two layers. Make sure you leave at least a half-inch space between pattern pieces for the seam allowance. Transfer all marks with a air-soluble pen.
  2. Sew on or just inside the lines. Leaving open where indicated.
3. Cut out pieces leaving a quarter inch seam around pieces. Clip corners and notch curves. Turn.
4. Stuff pieces firmly. Stuff the arms and legs to stuffing line and machine sew across line to secure stuffing. Wrap a piece of masking tape around leg at paint line. Paint shoes the color of your choice. Let dry completely.
5. Hot glue or sew body opening closed. Hot glue or sew arms and legs to body at marks.
6. For the face you can use gel pens, colored pencils, paint or whatever you choose. I used paint and did the outline with gel pens.
7. The pantaloons. Cut two 10" x 12" pieces from fabric. Sew 10" sides together to make side seams. Cut up the center 7" (this is the inside leg seam). Sew lace to the bottom of the pants. Sew inside leg seam. With embroidery floss run a gather stitch at the waist and bottom of legs. Slip on doll and pull gather to fit waist and legs. Tie bows to secure.
8. The Dress. Cut two bodice pieces on fold. Sew lace around the neck of each bodice piece. Sew shoulder seams. Sew lace on bottom of sleeves. Cut two 10" x 4  $\frac{1}{2}$ " pieces and 2 20" x 4  $\frac{1}{2}$ " pieces. Machine gather the top of all pieces. Pull gathers on the 10" long pieces and sew one to each bottom edge of the bodice. Pull gathers on the 20" pieces and sew to the bottom of the 10" pieces. Sew lace to bottom of both skirt pieces. Sew Down Sleeve bottom, bodice side and skirt. Cut a small opening in one bodice piece to fit over the head. Slip on doll. Glue or sew opening closed.
9. The Hair. Take several 6" pieces of yarn or hair of your choice. Glue or sew the center of the 6" pieces on the center back of the head starting at the top. Take a few pieces on each side of the front of the hair and tie back.

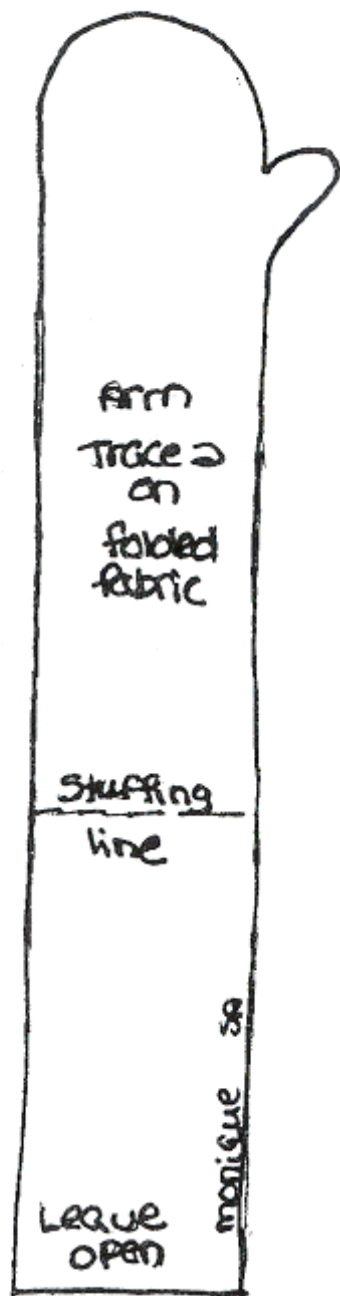
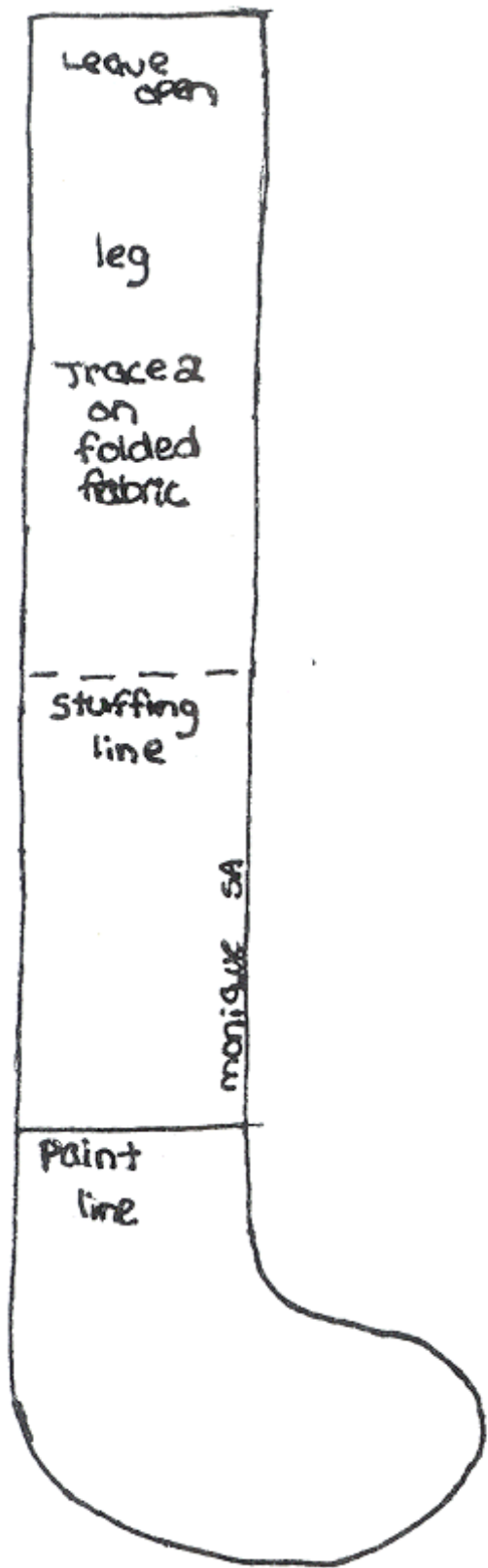
10. The Wings. Take two layers of fabric with right side together and lay them on top of a piece of batting big enough for the wings. Pin all layers together to hold in place. Trace wings onto fabric. Sew on or just inside the traced line. Trim excess fabric and batting to a  $\frac{1}{4}$ " seam. Clip corners and notch curves. Make a small slit in the top piece of fabric. Go through one layer only. Turn. You can quilt or embellish the wings any way you like. Glue or sew to the back of the doll.

11. Enjoy!!

For fun or profit. This pattern may not be mass-produced in any way. If you make her to sell please put a tag as to who designed it. You can make as many as you can by yourself to sell.







face options

