

# Phang



A cloth confection from

*My Sister Kate*

Copyright 2009

Kate Erbach

# Phang

A 16" cloth character by My Sister Kate Cloth Confections  
Copyright 2009

## Supplies:

½ yd. – body fabric  
fat quarter – legs  
fat quarter – boots  
½ yd. cape fabric w/ ½ yd. lining fabric  
wool felt – small pieces in white of eyes and teeth, 8 x 10" piece black for eyes and hair  
scrap fabric – closely matching body fabric for nose  
fat quarter – overall shorts  
fat quarter – shirt  
small piece of Fun Foam for bat  
½ yd. 1/8" ribbon  
2 – ½" buttons  
2 – 1/8" white buttons  
Black Perle cotton or embroidery thread  
cardboard  
freezer paper  
gel pens – black, purple  
White paint pen, black acrylic paint

**Phang** is made with a mixture of pattern pieces and template pieces. For template pieces, trace them to freezer paper. Pattern pieces are cut directly for the fabric. Read through the directions to familiarize yourself with the pattern construction.

**Body:** Cut two from pattern piece. Using a ¼" seam allowance sew from side of neck down to center bottom of fabric. Repeat for the other side. Fold the bottom and side body seams so they meet and form a triangle. Stitch across the triangle about ½" in from the outer edge of the triangle. Trim. Turn right side out and stuff body firmly. If extra support is preferred at neck, insert a ¼" dowel piece into neck and stuff around it.

**Legs:** Cut leg fabric 14" x 10", cut shoe fabric 10" x 10". Cut shoe fabric in half and sew each piece to the short side of the leg fabric. Fold in half so seams meet with right sides together. Press seams down. Iron leg templates to fabric with the seam where the boot meets the leg fabric. Sew from top of leg to end of toe, and top of leg to heel. Leave open at top and along bottom of foot. Cut out leaving a 1/8" seam allowance on sides and cutting next to the freezer paper on top and bottom. Turn right side out.

Cut 2 soles from sturdy cardboard. With strong thread, run a tight gathering stitch around the foot bottom. Insert the cardboard and pull up the gathering thread over the edges of the sole. Knot off securely. Stuff leg to line, stitch across. Cut 2 sole covers from fabric or felt, and 2 more soles from cardboard. Again, run a gathering stitch around the outside edge of the sole cover, insert a cardboard sole and pull up gathering thread to encase the sole. **REMEMBER TO HAVE A RIGHT AND LEFT SOLE.** Place this sole against the foot bottom and ladder stitch it into place against the foot. Turn under ¼" at leg top

and position legs at bottom of body with top of legs even with the bottom body seam. Whip stitch securely in place.

Using Perle cotton or embroidery thread stitch laces on the boots in a zig zag motion and tie off in a bow at the top.

**Arms:** Iron arm template to doubled fabric. Stitch around arm, leaving top of arm open. Turn right side out and mark finger lines and stitch. Stuff hands and arms firmly to line and stitch across line. Turn under ¼” at top of arm and whip stitch arms to shoulder on doll.

**Ears:** Iron templates to fabric, layer a piece of felt or batting under the fabric. Stitch around the ear leaving open where indicated. Turn right side out. Top stitch ear detail. Set aside.

**Head:** Cut 6 on bias. Using a ¼” seam allowance, sew 3 pieces together, then the remaining 3 pieces. Pin the ears to indicated area on one 3 piece set. Place both 3 piece sets right sides together and stitch from neck around the head to other side of neck. Turn head right side out. Stuff head firmly.

**Nose:** Iron template to contrast fabric and stitch all around. On ONE side only, cut a small slit and turn nose right side out. Iron flat. Place nose on head with top of nose at junction of seams and nose centered in the middle of the 3 piece set. Ladder stitch the nose to the head. With black gel pen, make two small ovals for nostrils.

**Eyes:** Cut two eyeballs from white felt, cut two pupils from black felt. Stitch pupils to eyeballs with whip or blanket stitch. Using the 1/8” white buttons, stitch them to the eyes so they are half on the pupil and half on the eyeball. Blanket stitch the eyes to the head so the eyes overlay the seams of the face by approximately ¼”. Use black gel pen to draw in eyebrows.

**Mouth:** The mouth is a slightly offset grin. Draw a simple smile line with purple gel pen. Draw a lower smile line. Fill in the area with black gel pen. Re-emphasize the mouth smile with purple. Cut two teeth from white felt. Glue teeth to mouth with edge at upper smile line.

**Hair:** Hair can be done with paint or felt. If using paint, draw a hairline and paint with black acrylic paint. If using felt; lay felt over head and cut the outline to fit the head, adding darts if necessary. Stitch the felt down with a blanket stitch. You can additionally secure it with a felting needle if desired.

Place head on neck of doll and ladder stitch in place. I like to go around twice for extra security.

**Shirt:** Cut one back on fold, cut two – fronts, sleeves and collar. Stitch fronts to back at shoulder seams. Lightly gather top of sleeve. Pin to shirt matching side seams and center

sleeve to shoulder seam. Stitch, easing in fullness. Turn up  $\frac{1}{4}$ " on sleeve bottom and stitch for hem. Sew side seam. Repeat for other sleeve. Iron up  $\frac{1}{4}$ " on one shorter long side of collar. With right sides together, sew collar. Turn right side out and press. Turn front facing on shirt fronts to outside and press. Pin right side of collar to right side of shirt so edge of collar just overlaps the facing. Stitch collar to shirt. Turn collar to inside, along with facing. Hand stitch collar to inside of shirt. Top stitch facings. Turn under  $\frac{1}{4}$ " twice for bottom hem. Place shirt on doll and ladder stitch front openings closed.

**Shorts:** Cut two straps. Use  $\frac{1}{4}$ " seam allowance, with right sides together, stitch one short side and down long side. Turn right side out and press.

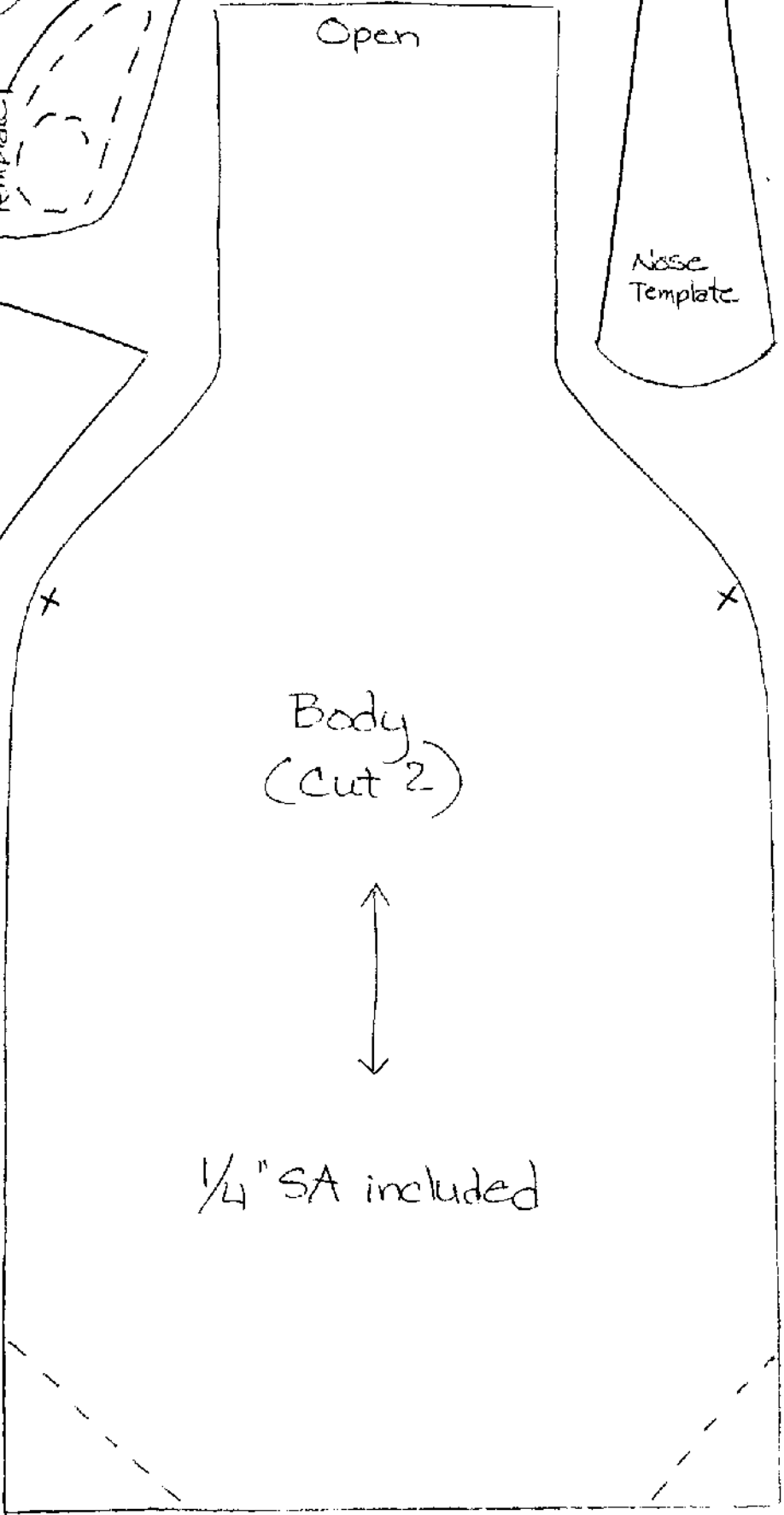
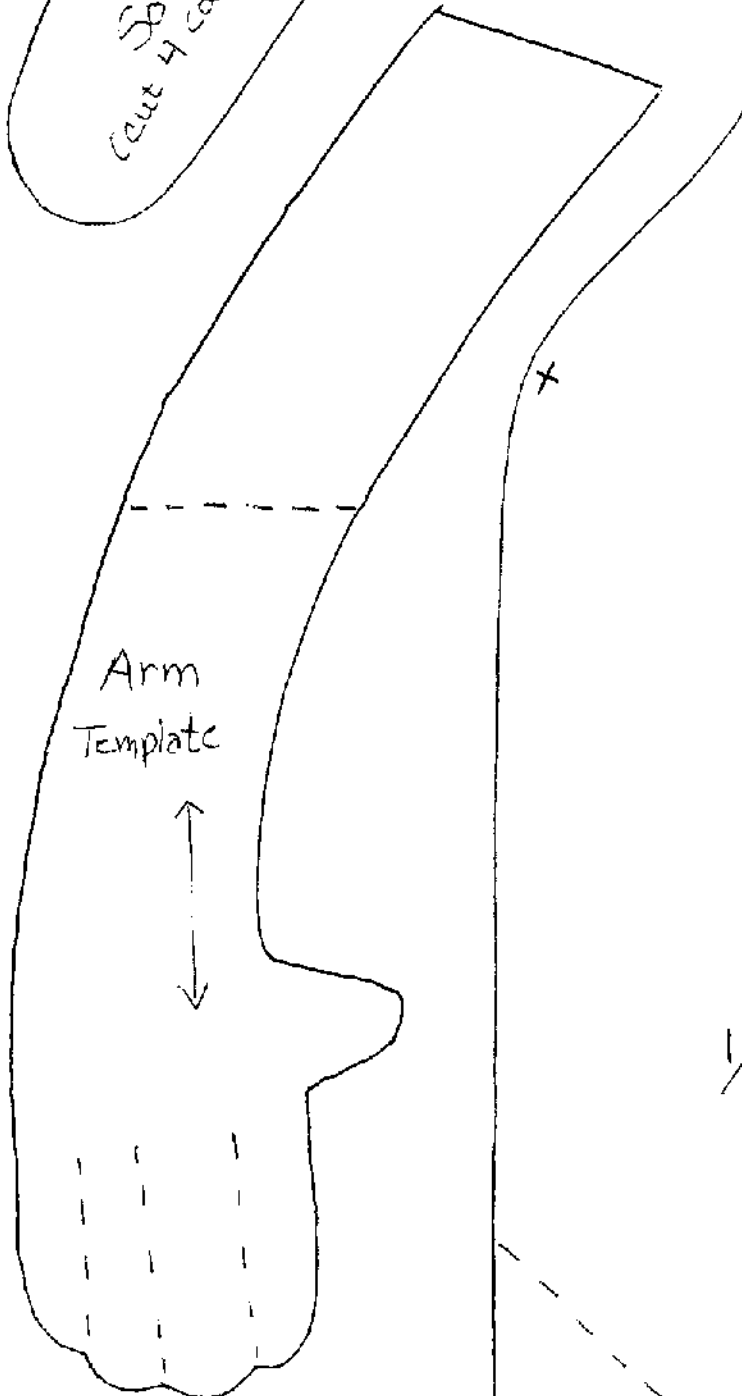
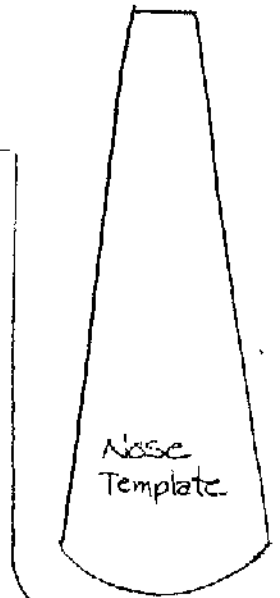
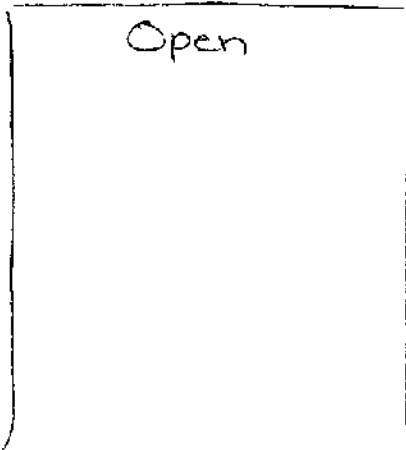
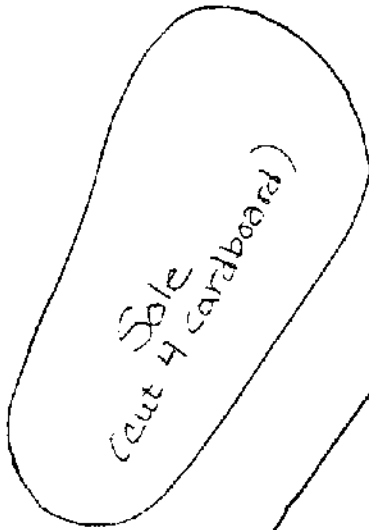
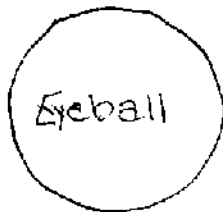
Sew center front seam on shorts. Sew center back seam starting 1" down from top. Press seam open and stitch edges down for back opening. Turn up  $\frac{1}{4}$ " hem twice on lower edge of shorts, press, stitch. Stitch inner leg seam.

Try shorts on doll, mark where pleats need to be taken. Remove shorts. Baste across waistline, securing pleats marked. Fold over  $\frac{1}{2}$ " and stitch waistline.

Using  $\frac{1}{2}$ " buttons, secure straps to front of shorts at pleats. Criss cross the straps at the back and tack in place to inside waistband approximately 1" away from center back opening. Place shorts on doll and stitch opening closed at shorts back.

**Bat Tie:** Trace bat to Fun Foam. Punch two small holes where indicated. Thread ribbon through holes, place around neck of doll with ribbon under collar, pull snug and tie in bow.

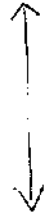
© Kate Erbach  
2009

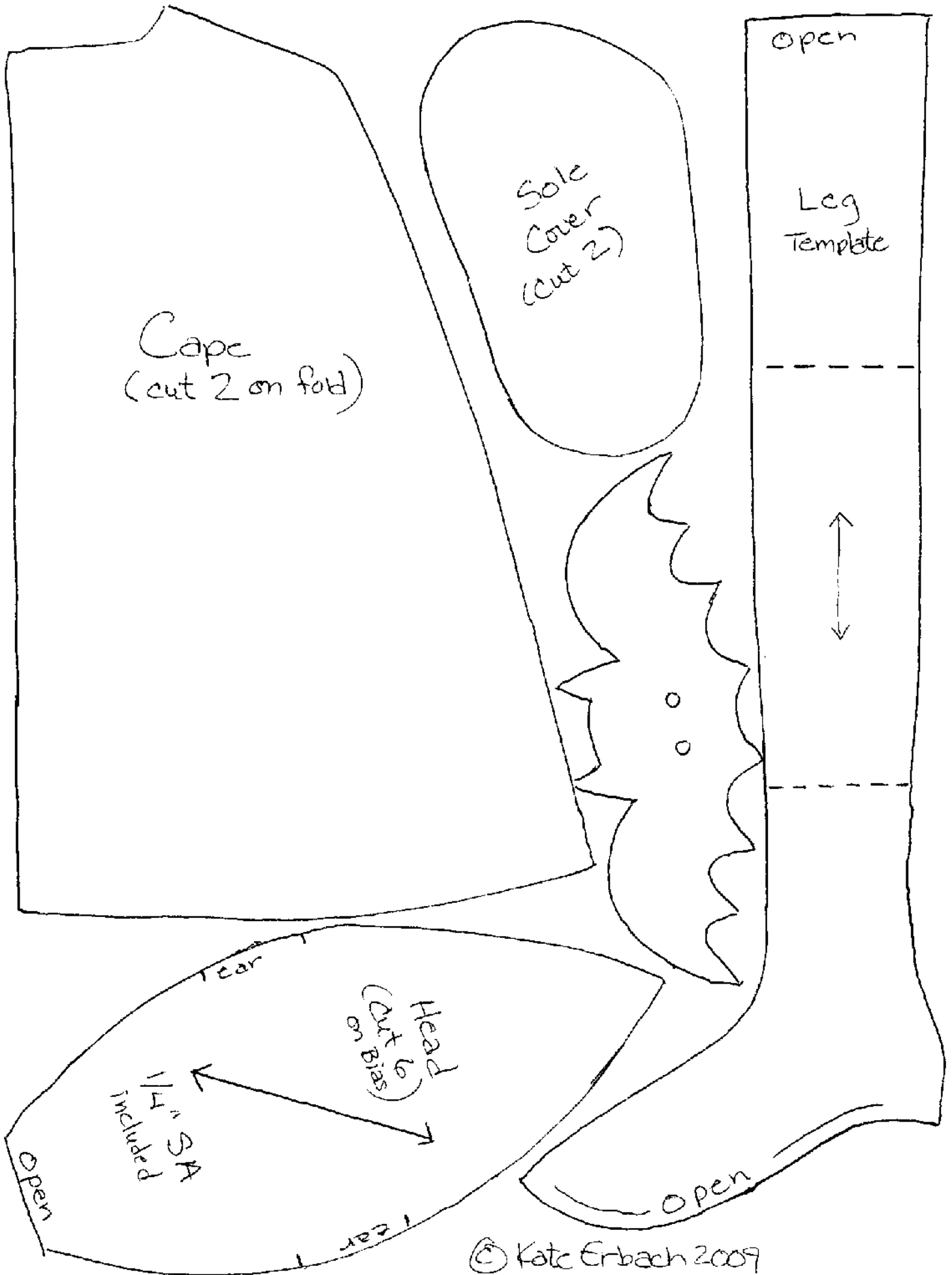


1/4" SA included

Arm  
Template

Body  
(cut 2)





Shirt  
Back  
(Cut 1 on fold)

Fold

Pleat

Shorts  
(Cut 2 on fold)

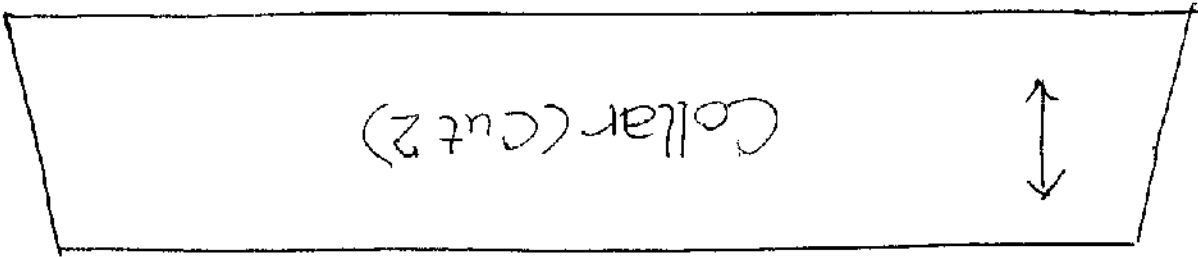
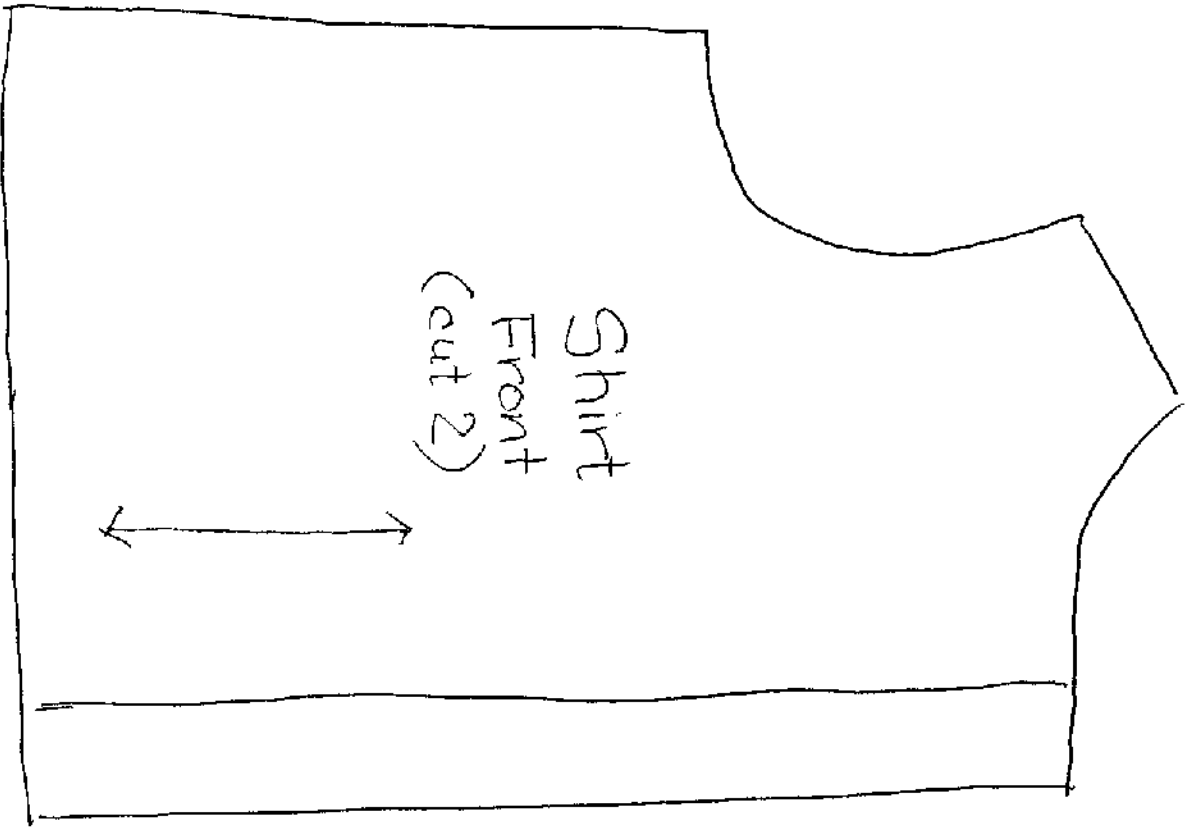
Fold

Hem

Narrow Hem

Sleeve  
(Cut 2)

©Kate Erbach 2009



Overall straps  
(cut 2) 9" x 1.5"

© Kate Erbach 2009